

Advanced, Convenient Obstetrics & Gynecological Care Where You Are

NORTHEAST PHILADELPHIA AND BUCKS COUNTY

The best, most leading-edge gynecological care can be found where you are – in Northeast Philadelphia and Bucks County. Our Center for Gynecology and Women's Health is proud to offer a talented, passionate group of gynecological professionals who dedicate themselves to offering the best possible care to the women in our communities.



Jimmy Ruiz, MD
Chair, Obstetrics
& Gynecology
Obstetrician/Gynecologist



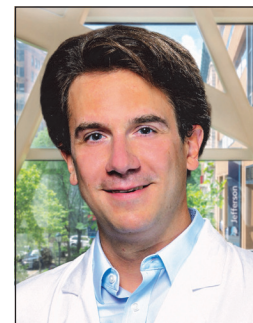
Kerry Krauss, MD
Obstetrician/Gynecologist/
Gynecological Surgeon



Deborah Schrager, MD
Gynecologist



Juhl Shukla, DO
Obstetrician/Gynecologist/
Gynecological Surgeon



Justen Sumner, MD, MPH
Obstetrician/Gynecologist/
Gynecological Surgeon



Anne Torna, MD
Obstetrician/Gynecologist

Services offered:

- Routine gynecological exams
- Minimally invasive & robotic-assisted gynecological surgery
- Menopause management
- Family planning
- Infertility evaluation and treatment

Great News – Starting February 2019 our practice will be offering Obstetrics Services, which will consist of pre-natal and post-natal care with a coordinated delivery services at Abington – Jefferson Health.

These physicians provide exceptional care to our patients at the following locations:

NORTHEAST PHILADELPHIA

Jefferson Torresdale Hospital
Medical Office Building (MOB)
10800 Knights Road, Suite 106
Philadelphia, PA 19114
[215-612-4143](tel:215-612-4143)

MAYFAIR

7526 Frankford Avenue
Philadelphia, PA 19136
[215-612-4143](tel:215-612-4143)

BUCKS COUNTY

Oxford Valley Medical Plaza (OVMP)
240 Middletown Boulevard, Suite 101B
Langhorne, PA 19047
[215-757-5737](tel:215-757-5737)

