

Advanced, Convenient Neurosurgical and Neurological Care Where You Are

NORTHEAST PHILADELPHIA AND BUCKS COUNTY

Remember when receiving leading-edge neurological care meant finding a specialist and traveling far outside your community?

Not anymore. Jefferson Health now offers exceptional neurological and neurosurgical services where you are – in Northeast Philadelphia and Bucks County.

Part of the Vickie and Jack Farber Institute for Neuroscience, our physicians are highly trained, skilled medical professionals who are passionate about providing the best in quality care in a convenient location near you.

Conditions treated include:

- Spinal trauma
- Degenerative spine disease
- Traumatic brain injury
- General neurological conditions
- Brain tumor
- Stroke

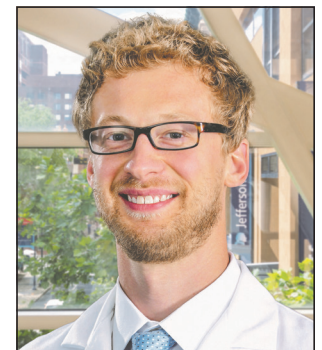
For more information, please call **215-612-5699**
or visit [JeffersonHealth.org/NortheastNeuro](https://www.jeffersonhealth.org/NortheastNeuro).



Tony Anene-Maidoh, MD
Neurosurgeon



Gentian Toshkezi, MD
Neurosurgeon



Christopher Becker, DO
Neurologist (*inpatient only*)



HOME OF SIDNEY KIMMEL MEDICAL COLLEGE

Jefferson Torresdale Hospital

Medical Office Building, Suite 213 • 10800 Knights Road • Philadelphia, PA 19114